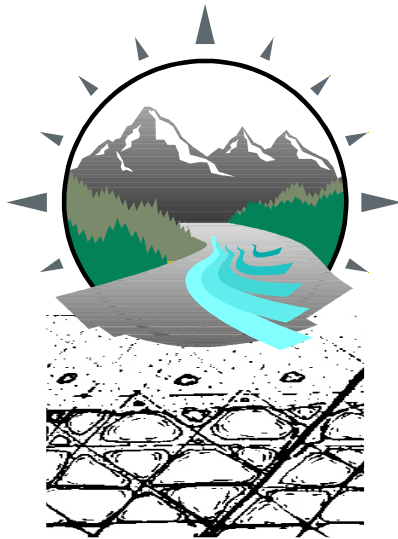
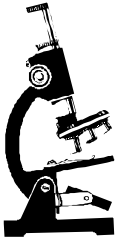


ATLANTIC GEOSCIENCE & ENGINEERING

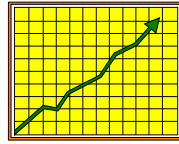


≡ *Silver Service*™

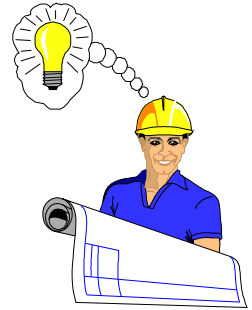
Our Mission



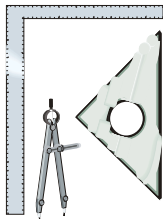
Analytical Skill



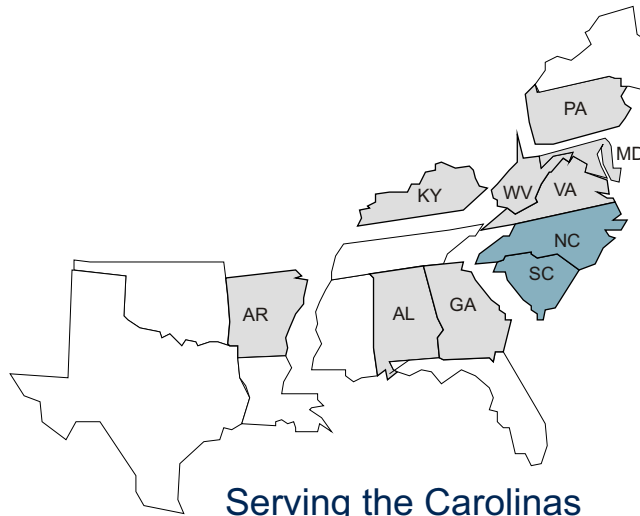
Client Value



Creativity

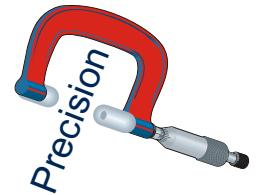


Technical Superiority



Serving the Carolinas

(Registered in Grayed States as Well)



Precision



Accuracy

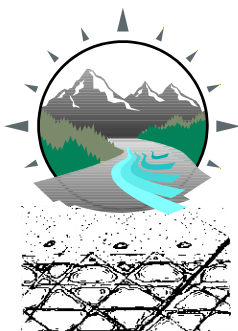


Integrity



“He profits most who serves best: To this end, it is better to do more than you promise than to promise more than you do.”

We Want to Help You Invest Your Money Rather Than Merely Spend It!



Silver Service™

ATLANTIC GEOSCIENCE & ENGINEERING

◆ P.O. Box 620937, Charlotte, NC 28262-0937

◆ Telephone: (704) 701-1319



Statement of Qualifications

Atlantic Geoscience & Engineering was established in 1994 by D. Bruce Nothdurft, P.E., P.G. to provide geoscientific investigations of the highest quality with creative, cost-effective state-of-the-art solutions.

Atlantic Geoscience & Engineering is a minority-owned small business enterprise (NC-certified HUB) dedicated to developing loyal client relationships by maintaining the highest standards of integrity, fairness, accuracy, technical excellence, and analytical skill.

Bruce Nothdurft has over 15 years of geotechnical and environmental engineering experience, as well as postgraduate education in geotechnical engineering, geophysics, groundwater geology, and wetland ecology.

Representative projects include:

Geophysical Investigations:

Stanley County Landfill, Albemarle, NC: conducted magnetic survey to delineate diabase dikes

Upjohn Pharmaceuticals, North Haven, CT: assisted

G.N. Richardson & Associates with seismic refraction and ground-penetrating radar studies

Northeast Medical Center:

Blast monitoring for a historic three-story brick hospital

Geotechnical Investigations:

Presbyterian Hospital, Charlotte, NC:

Installation monitoring and load testing of auger cast piles on a 5-story parking deck and a 7-story medical office tower

Installation monitoring and bearing evaluation of drilled piers on a 7-story parking deck

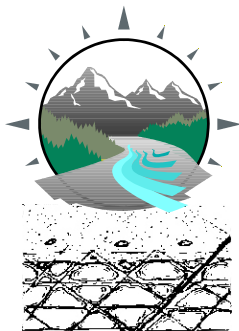
City of Charlotte, York Road Landfill:

Installation monitoring and bearing evaluation of steel H-piles through a closed MSW landfill

Northeast Medical Center, Concord, NC:

Installation monitoring and load testing of soil-nailed excavation shoring system and design of foundation underpinning for a historic three-story brick hospital

Many other investigations for various commercial, Institutional, industrial, and residential projects

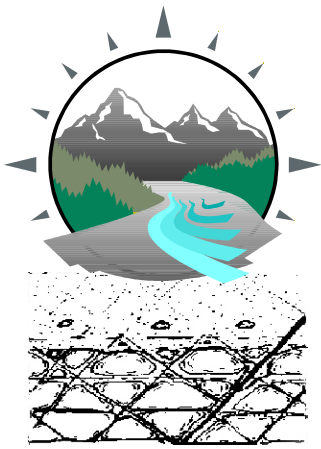


Silver Service™

ATLANTIC GEOSCIENCE & ENGINEERING

♦ P.O. Box 620937, Charlotte, NC 28262-0937

♦ Telephone: (704) 701-1319



ATLANTIC GEOSCIENCE & ENGINEERING

Geotechnical, Geological, & Environmental Consultants

Silver Service

ATLANTIC GEOSCIENCE & ENGINEERING - helping business get a solid footing in the Carolinas!^(c)



Complete Geotechnical, Environmental and Geophysical site investigation



Geophysical Exploration



PIT testing of Augercast piles



Monitoring pile driving

Deep Foundation Specialists

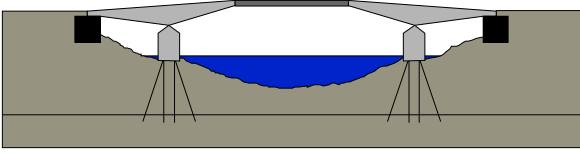


Laboratory Soil Testing

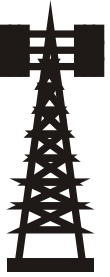


Summary of Geotechnical Engineering Services

Site Subsurface Exploration & Sampling



*Geotechnical Studies for Foundations
Commercial/Industrial/Towers/Bridges/Residential
Piles/Piers/Rafts/Mats/Spread Footings*



Laboratory Testing on Soils

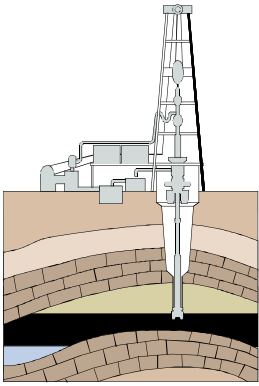


Foundation Failure Investigation



Construction Quality Testing

*Constructed Earth Fill Quality Testing
Dynamic Pile Testing
Deep Foundation Load Testing
AugerCast Pile Integrity Testing*



Geological Mineral/Aggregate Resource Assessment

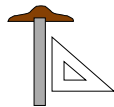
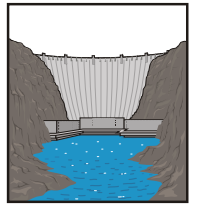


Surface & Borehole Geophysics

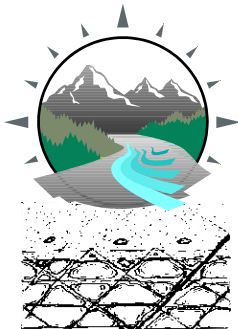
*Geophysical Surveys for Depth to Rock
Blast Monitoring/Seismic Evaluation
Groundwater Surface & Constituent Modeling*

Earthen Dam/Levee Evaluation

*Slope Stability Analyses
Laboratory/ Field Testing
Cutoff/ Drain/ Filter Design*



*Excavation Shoring & Bracing Design
Instrumentation Design & Installation
Design of Rapid Settlement Systems
Groundwater Dewatering System Design
Design of Soil Nailing, Rock Bolting, & Ground Anchors
Design of Geosynthetically Reinforced Footings & Slopes
Foundation Design
Retaining Wall Design*



Silver Service™

ATLANTIC GEOSCIENCE & ENGINEERING

◆ P.O. Box 620937, Charlotte, NC 28262-0937

◆ Telephone: (704) 701-1319



Summary of Construction Testing Services

Earthwork Services

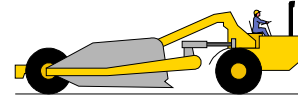
Soil Property Determination

Grain-Size Distribution

Atterberg (Plasticity) Limits

Moisture-Density (Proctor) Relationships

Borrow Source Suitability



Undercutting: Verification of Necessity of Removal of Unsuitable Soil

Seismic Analysis for Rippability of Rock

Monitoring Placement & Compaction of Structural Fill

Design of Geosynthetically Reinforced Fill



Foundation Services

Design of Geosynthetically Reinforced Footings

Structural Design of Alternative Foundation Systems

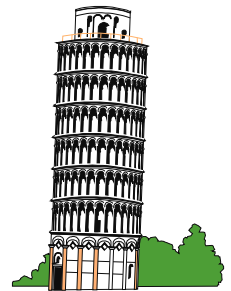
Spread Footing Systems

Bearing Pressure Confirmation

Bearing Surface Cleanliness & Moisture Condition

Plan Dimensions, Depth & Bearing Elevation

Observation of Reinforcing Steel Placement, Cover, Splicing, Cleanliness



Driven Pile Foundations/ Augercast Piles/ Pressure-Injected Footings

Installation Monitoring & Evaluation

Batter, Tip/Butt Elevation, Integrity

Pile Load Testing

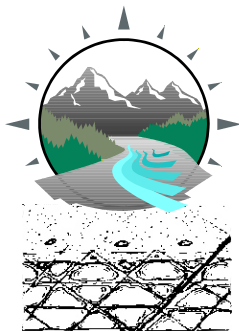
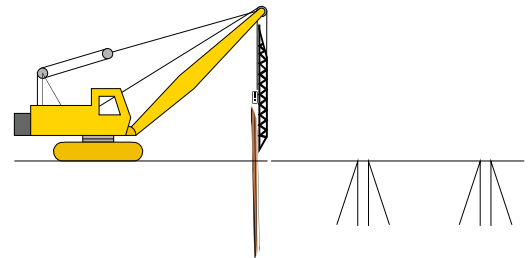
Drilled Pier Foundations

Installation Monitoring & Load Capacity Evaluation

Plumbness, Tip/Butt Elevation & Plan Dimensions

Cleanliness & Groundwater Conditions

Observation of Reinforcing Steel Placement, Cover, Splicing, Cleanliness



≡ Silver Service™

ATLANTIC GEOSCIENCE & ENGINEERING

◆ P.O. Box 620937, Charlotte, NC 28262-0937

◆ Telephone: (704) 701-1319